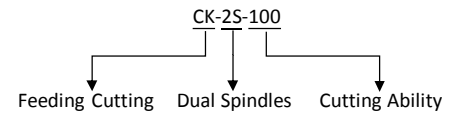


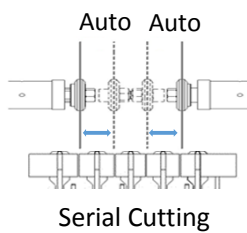


# Dual Spindles Auto. Precision Cutting Machine

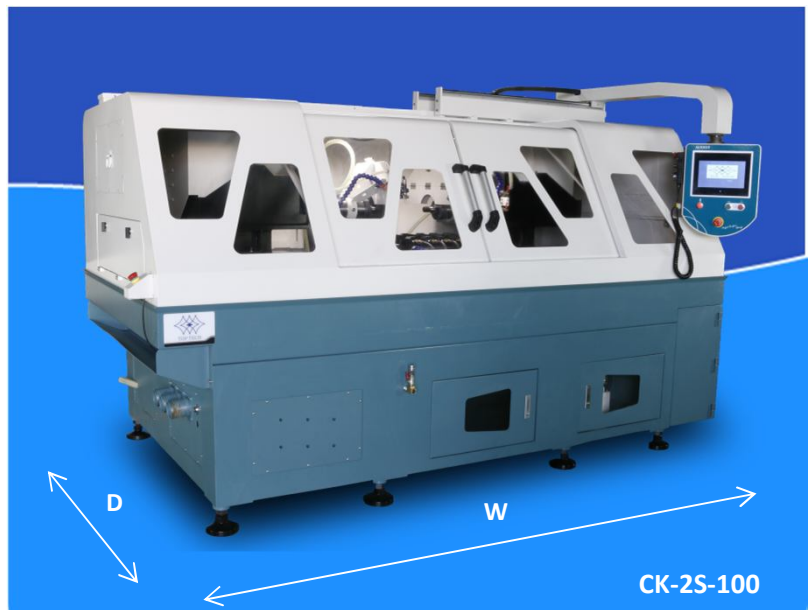
## ALTOCUT-CK SERIES



- 10" HMI touch panel
- Dual spindles can cut simultaneously
- Cutting crankshaft with multiple serial cutting function and hydraulic vise (Optional)
- Dual spindles cutting can greatly lower labor force and reduce time of replacing vises
- Intelligent variable feeding rate will adjust automatically, which depends on material and hardness of specimen



Hydraulic Vise (Option)



- Suitable for long specimen (Max. 3500 mm)
- Application range: automotive, aerospace, and manufacturing industry
- Suitable for large sample, automotive parts, long specimen and crankshaft

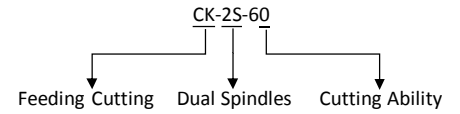
Model	CK-2S-100	
Travel Distance (mm)	Feeding Travel Distance	450 ↗
	Right Spindle Travel Distance	220 ↔
	Left Spindle Travel Distance	220 ↔
Motor Power	10HP x 2 (7500W x 2)	
Cutting Ability Max. (mm)	Max. Ø100	
Cut-Off Blade (mm)	Max. Ø406 x Ø31.75 (Ø32 )	
Feeding Rate (mm/s)	0.001~50	
Rotational Speed (rpm)	2500 rpm (60Hz)±50% (1250~3750 rpm) 2100 rpm (50Hz)±50% (1050~3150 rpm)	
Feeding Method	Auto:	6 modes, including multiple serial cutting modes and pulse cutting function
	Manual:	Electric hand wheel
Size of T-Slot Table (mm)	500 x 438	
Machine Dimension WxDxH (mm)	3180x1730x2000	
Machine Weight (kg)	3000	
Power Supply (V)	AC 220V/380V/415V/440V 3Ø (special voltage can be customized)	



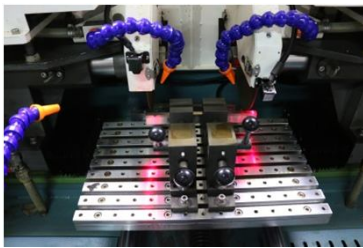
Automatically cutting and simultaneously cutting for dual spindles

# Dual Spindles Precision Cutting Machine

## ALTOCUT-CK SERIES



- 7" HMI touch panel
- Dual spindles cutting simultaneously
- Automatic hydraulic vise (Optional)
- Greatly lower labor force and time
- Intelligent operation for cutting which is convenient and fast
- Left and right spindle movement can be adjusted electrically



Dual Spindles



- Suitable for long specimen (Max. 480mm)
- Application range: automotive, aerospace, and manufacturing industry
- Suitable for large sample, automotive parts, long specimen and crankshaft

Model	CK-2S-60	
Travel Distance (mm)	Feeding Travel Distance	260 ↗
	Right Spindle Travel Distance	200 ↔
	Left Spindle Travel Distance	200 ↔
Motor Power	3HP x 2 (2250W x 2)	
Cutting Ability Max. (mm)	Max. Ø60	
Cut-Off Blade (mm)	Max. Ø305 x Ø31.75 (Ø32)	
Feeding Rate (mm/s)	0.01~5	
Rotational Speed (rpm)	3000rpm (60Hz) or 2500rpm (50Hz)	
Feeding Method	Auto:	Control by touch panel Automatic home point return after cutting
	Manual:	Control by touch panel
Size of T-Slot Table (mm)	480x305	
Machine Dimension WxDxH (mm)	2450x1300x1700	
Machine Weight (kg)	1500	
Power Supply (V)	AC 220V/380V/415V/440V 3Ø (special voltage can be customized)	



Sample after cutting