

VisiLED Controller

for stereo microscopy



The VisiLED Controllers MC 1100 and MC 1500 are the core of the VisiLED system. The compact MC 1100 allows the setting of various illumination parameters, including light intensity, segment modes and change of illumination direction, while the MC 1500 offers this for two light heads simultaneously.

Features:

- Preset segment modes plus rotation option.
- Extra-fine smooth dimming.
- MC 1500 offers an external trigger to start strobe function frequencies between 15-5 KHz.
- MC 1500 offers optional PC control via RS 232 & footswitch control.

Advantages:

- Advanced setting options for optimum contrast.
- Ergonomics and blindfold operation.
- MC 1500 model offers control of two channels.
- Save up to four complex illumination scenarios with MC 1500.

Types and compatibility

Controller	MC 1100	MC 1500
Part No.	400.080	400.000
Dimensions (W x D x H) (mm)	90 x 152 x 25 3.54" x 5.98" x 0.98"	153 x 110 x 40 6" x 4.3" x 1.58"
Connectors on backside	<ul style="list-style-type: none"> • DC In • 1 Lighthead Connector • ESD plug 	<ul style="list-style-type: none"> • DC In • RS232 Interface • 2 Lighthead Connectors • 1 Footswitch • 1 Trigger
Weight, approx. (kg)	0.17	0.65
Cooling	Convection	Convection
Power supply unit		
Part. No.	400.050	
Operating voltage, frequency	Input 100–240V AC, 50/60 Hz	
Input voltage (V)	21-24 DC	
Power consumption, max. (VA)	40	
Protection class	II	
Overvoltage category	II	
Certificates		
Marking	CE, (power supply unit CE, UL, PSE)	
EMC-class	B	

Accessories:

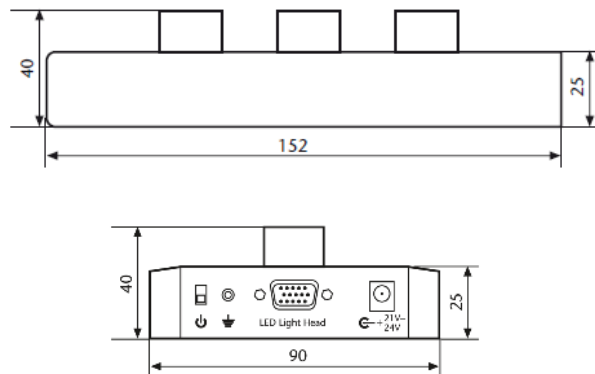
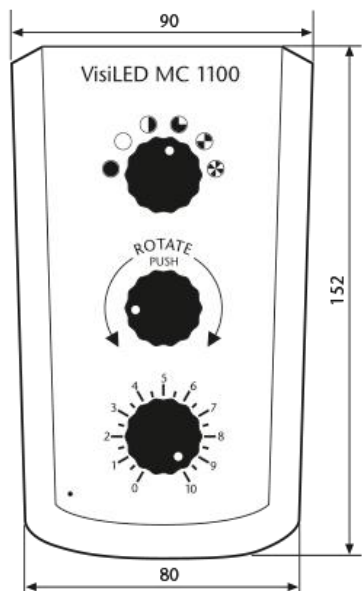
Power cord 1.8 m	
EU Plug: IEC-C13 to CEE 7/7	400.051
US Plug: IEC-C13 to NEMA 5-15	400.052
UK Plug: IEC-C13 to BS 1363	400.053
Swiss Plug: IEC-C13 to SEV1011	400.054

Note: country specific power cord must be ordered separately!

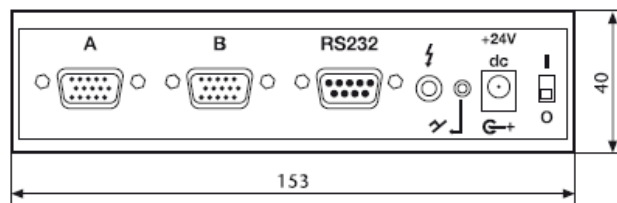
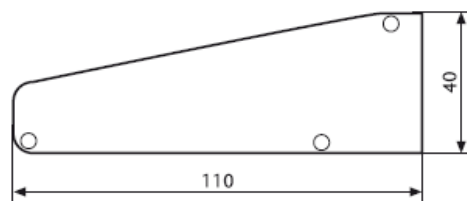
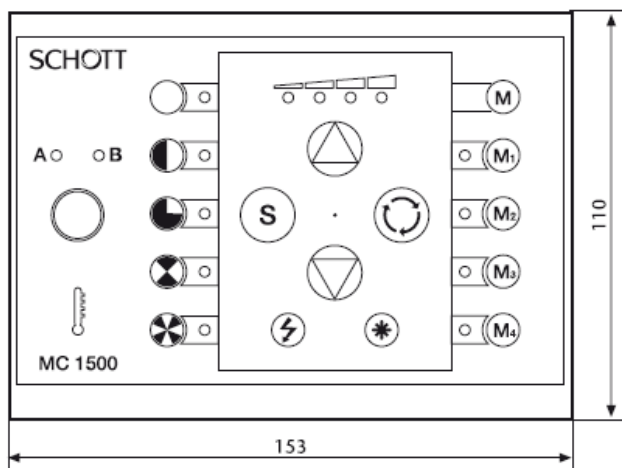
We provide a variety of accessories for our VisiLED Series. For details please refer to our system diagrams or according datasheets.



Dimensions



VisiLED Controller MC 1100



VisiLED Controller MC 1500

Pictures are provided for illustration purposes only, and may not provide an accurate reflection of the actual product.

VisiLED Ring Lights

for stereo microscopy



VisiLED Ring Lights are available in brightfield, darkfield and UV versions. All offer extremely homogeneous and shadow-free illumination in a robust metal housing, with a well-designed heat sink enabling maximum brightness and a long lifetime. In combination with accessories such as diffusers, polarizer sets and adaptor rings, different illumination modes are possible.

Features:

- Slim ergonomic design.
- Specially selected LEDs.
- Five segment modes possible: full circle, semi-circle, quarter-circle, dual-segment and four-segment.
- Maintenance-free with an lifetime of 50,000 hours for white LEDs.
- Actively controlled LED temperature.
- Darkfield Ring Light adaptable to various objective diameters and working distances.

Advantages:

- Extra-fine dimming.
- Unique Slim Ring Light adjustable for various working distances and darkfield.
- Dedicated versions compatible with objective revolvers.
- UV Ring Light allows electronic switching between bright field and UV.

Technical Specifications:

Description	Part No.	Free working distance	Max. illuminance (at working distance)	Inner Ø	Outer Ø	Height	Color temperature
		(FWD)		(ID)	(OD)	(H)	(K)
Brightfield S40-75	400.110	55-145 mm 2.17"-5.71"	110 klx (85 mm) 3.35"	66 mm 2.60"	92 mm 3.62"	25 mm 0.98"	Approx. 5,600
Brightfield S80-55	400.255	50-135 mm 1.97"-5.32"	200 klx (75 mm) 2.95"	66 mm 2.60"	114 mm 4.49"	25 mm 0.98"	
Brightfield S80-25	400.225	25-50 mm 0.98"-1.97"	360 klx (30 mm) 1.18"	66 mm 2.60"	114 mm 4.49"	25 mm 0.98"	
Brightfield S80-65N	400.265	35-100 mm 1.38"-3.94"	130 klx (55 mm) 2.17"	81 mm 3.19"	130 mm 5.12"	25 mm 0.98"	
Slim Ring Light ¹	400.150	40 - 90 mm 1.57" - 3.54"	65 klx (50 mm) 1.97"	66 mm 2.60"	82 mm 3.23"	35,5 mm 1.40"	
		20 - 40 mm 0.79" - 1.57"	45 klx (25 mm) 0.98"			37,5 mm 1.48"	
Darkfield S40-10D	400.300	5-15 mm 0.20"-0.59"	130 klx (10 mm) 0.39"	66 mm 2.60"	118 mm 4.65"	14 mm 0.55"	
UV Ring Light ² S80-55 UV	400.200	50-135 mm 1.97"-5.32"	White: 100 klx (75 mm)	66 mm 2.60"	114 mm 4.49"	25 mm 0.98"	
			UV: 160 W/m ²				
		Characteristics:	Wavelength UV	Central Wavelength UV	IEC62471 Risk Class		
Segment-Ring Light, consists of 4 UV and 4 white LED Segments				340-420 nm	375 nm	3	



¹Focus optic rings for both working distance ranges are included

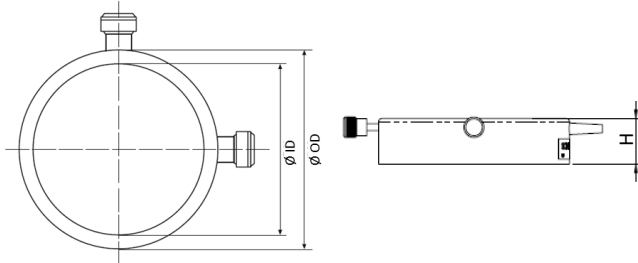
²Compatible only with Controller MC 1100. UV protection filter LP435 included

We provide a variety of accessories for our VisiLED Series. For details please refer to our system diagrams or according datasheets.

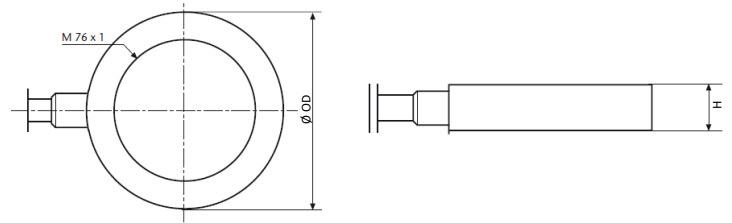


Dimensions

Brightfield and UV Ring Light



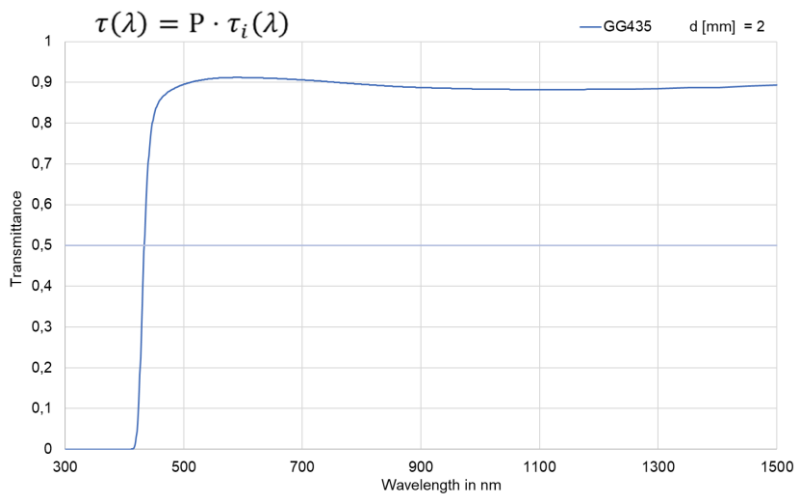
Darkfield Ring Light



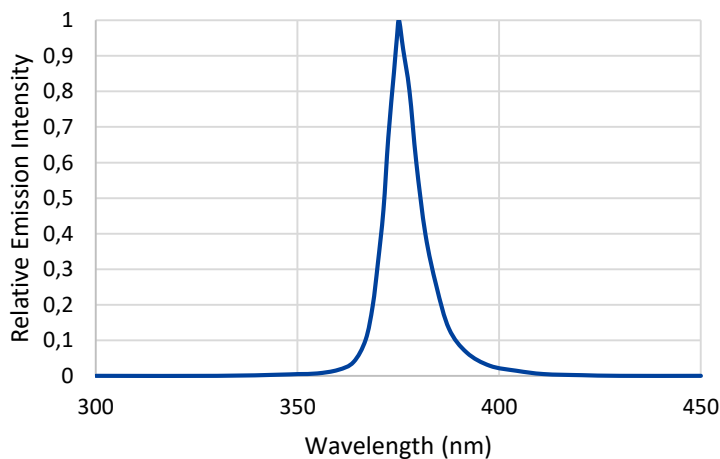
Pictures are provided for illustration purposes only, and may not provide an accurate reflection of the actual product.

Optical Specifications UV Ring Light S80-55 UV

Optical Transmittance of UV protection filter SCHOTT GG435



Spectrum UV



All specifications are subject to change without prior notice. This datasheet or any extracts thereof may only be used in other publications with express permission of SCHOTT. © SCHOTT AG

Lighting and Imaging
SCHOTT AG
 Hattenbergstrasse 10
 55122 Mainz
 Germany
 Phone: +49 (0) 6131/66-7796
 Fax: +49 (0) 6131/66-7850
 info.microscopy@schott.com
 www.schott.com/microscopy

SCHOTT
 glass made of ideas