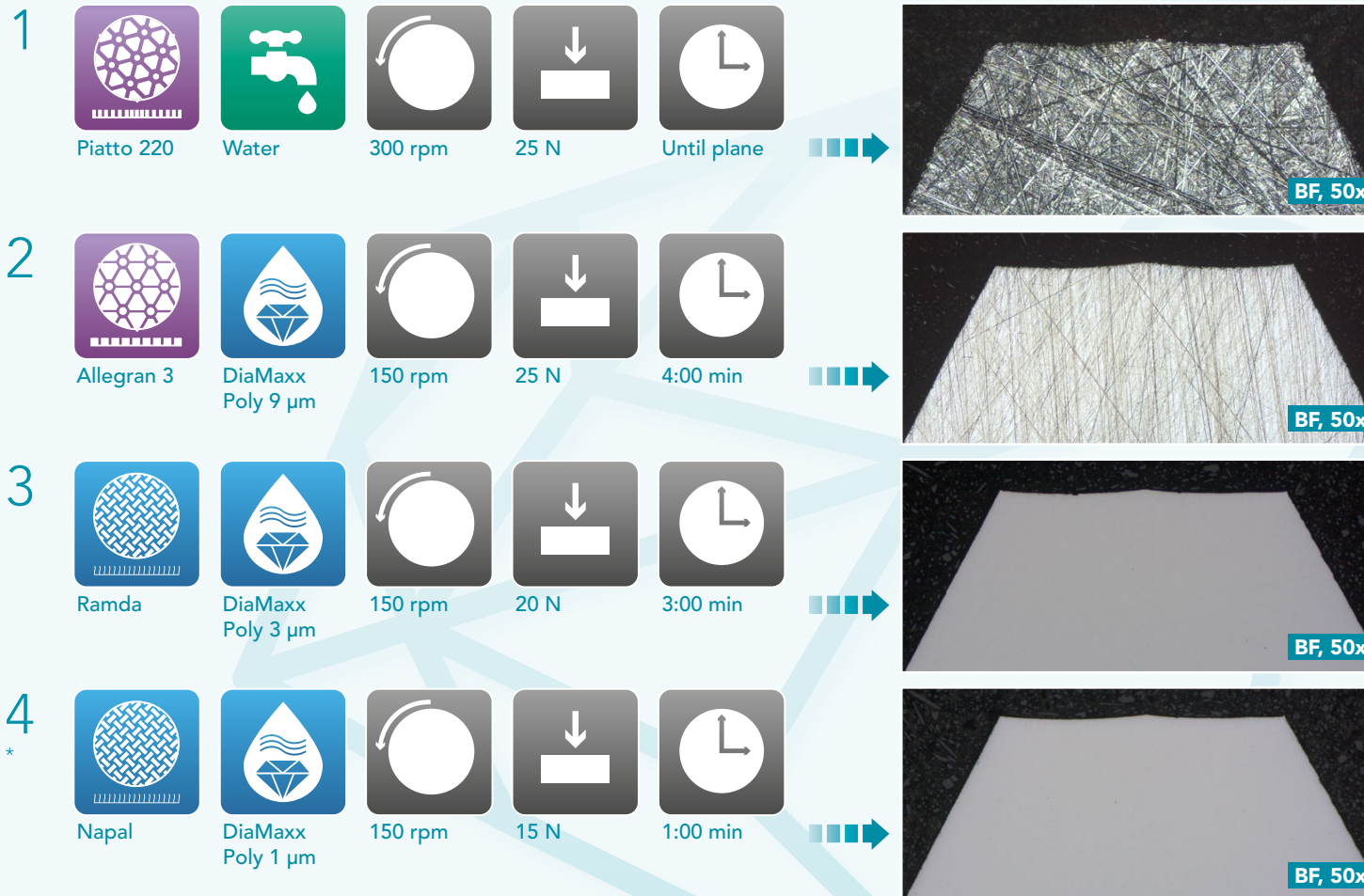


Aka-Brief #18 Surface Hardened Steel



Times are stated for a 300 mm preparation system and 40 mm dia. samples.
On a 250 mm system the times should be increased by 30%, on a 200 mm system by 100%.
With larger samples the force should be increased, with smaller samples decreased.

Time and Force may vary depending on the equipment.

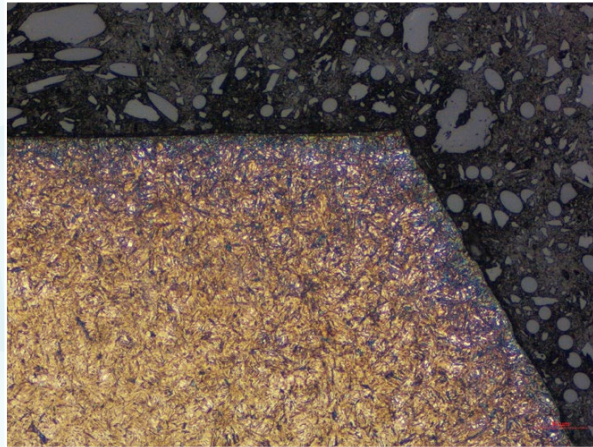
* The last preparation step is optional.

Aka-Brief #18 Surface Hardened Steel

FINAL RESULT



Etched with 3% Nital, BF, 50x



Etched with 3% Nital, BF, 100x